

MP²

Business Control and Analysis

- Presents a uniform view of your operation
- The system provides for better decision data
- The system connects all business units
- Illustrates the business processes
- Secures that the planning is profitable
- Long term planning
- Guarantees that the input is correct
- Builds different planning scenarios

An important key to profitability improvement for the public transportation operator is bridging planning and financial processes. Making the right management decisions determines the public transportation operator's profitability and MP² Business Control and Analysis is the strategic tool that brings the two sides together in one system.

With **MP² Business Control and Analysis**, management and strategic planners are given the invaluable possibility to exactly calculate and overview all associated costs and revenues connected to the operation.

Functional

The ability to provide real time management information is particularly useful in business's with divided or de-centralized operations. When integrated with reservations systems, the MP² system immediately provides profitability measures and key performance indicators for subsidiaries, business divisions or route areas.

By being able to simultaneously overview and analyze schedules, vehicle utilization, passenger demand as well as drivers/on board personnel from a cost- and revenue point of view the user gets a clear picture of where and why the company is earning or losing money. All data is held on the most possible detailed level and can be aggregated from there.

A large variety of diagrams and key figures are available and can be shown on any level that the user defines. This possibility of extensive selections concerning details and levels makes the system extraordinary useful.

MP² Business Control and Analysis gathers and presents figures and facts, obtained from different data sources and systems within the company, to provide reliable and detailed strategic decision support. To avoid duplicating data **MP²** has the unique ability to read any database formats as well as flat files and excel. The system dynamically recalculates and updates all costs and revenues counters in **MP²** as changes are made along the planning chain.

The system also renders the possibility to easily compare outcome with plan, which enables the user to identify and analyze the planned production and operated production. Any number of schedules can be loaded for analysis and comparison.

Evaluating and accurately monitoring the economic performance of the operation becomes the first priority for management. Being able to rapidly model the effect of new decisions on all critical company functions becomes the second.

With all units and departments using data from the same source for their decisions, the reliability is substantially increased.

"Just push the button..."

"...just push the button, the system will achieve results that would take months for a consultant to work out. We are only two persons administrating six airlines and thirty different types of aircraft."
MP² airline superuser

"Many more possibilities..."

*"Without the **MP²** system the work is much more complicated and more time consuming...
MP² system makes it all simple and gives you so many more possibilities"*
MP² railway superuser

Technical

Input

Data sources are any number of schedules, vehicle data, cost- and revenue data, passenger demand and forecast etc. The system handles very detailed data. Almost all formats are readable which makes it easy for the user to use already existing data from other systems within the company.

Output

The user is able to select among numbers of diagrams and reports showing detailed key figures even down to booking classes.

By selecting various key figures from a list the user defines which figures and on what level the reports shall be shown.

All reports are easily printed or transferred to Word or Excel.

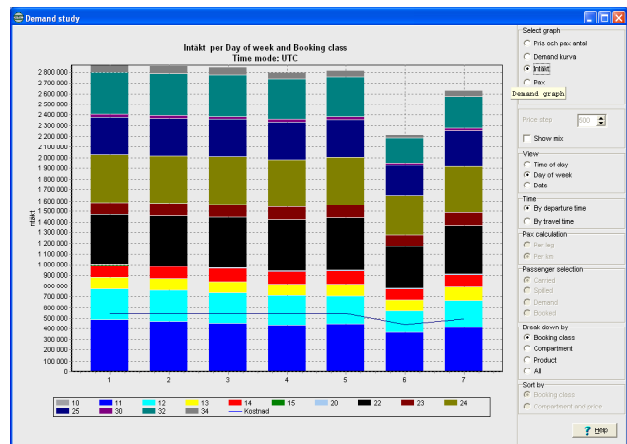


Diagram showing passenger and price per booking class

For more information...

Industrial Optimizers

Strandbergsgatan 51

SE-112 51 , Stockholm, Sweden

Tel: 46 8 440 79 31, Fax: 46 8 440 79 40

info@industrialoptimizers.com

www.industrialoptimizers.com